

# **RL FLOWMASTER®**

## **OPERATING and SERVICE INSTRUCTIONS FOR BACKPACK SPRAYER MODEL 614**

If you have any questions about your sprayer, please do not return to the store. Call the Customer Service Hotline at 1-800-253-4642 year-round Monday through Friday 8:00 a.m. to 7:00 p.m.; March 1-August 31 on Saturday and Sunday 10:00 a.m. to 4:00 p.m., Eastern Time.

**WARNING!! THIS PRODUCT IS DESIGNED TO SPRAY CHEMICALS THAT MAY BE HARMFUL AND COULD CAUSE SERIOUS PERSONAL INJURY IF INHALED OR BROUGHT INTO CONTACT WITH THE USER. FAILURE TO READ AND FOLLOW OPERATING INSTRUCTIONS BEFORE USE AND/OR MISUSE OF THIS PRODUCT COULD RESULT IN EXPLOSIVE FAILURE WITH MAJOR INJURIES.  
KEEP THIS MANUAL FOR FUTURE REFERENCE. FAILURE TO FOLLOW MANUFACTURER'S RECOMMENDED USE AND CARE INSTRUCTIONS WILL VOID ANY EXPRESSED OR IMPLIED WARRANTIES.**

### **HOW TO ASSEMBLE:**

1. Attach spray wand to flow control and tighten firmly
2. Take pump handle (tube) slide silver washer onto the end of the pump handle, slide pump handle into T lever at the bottom of the tank. Be sure handle forms an L shape with the tank. Align holes to match and push "R" shaped pin through the holes. This affixes handle in place. For storage, reverse procedure and place "R" pin through pump lever to keep from losing "R" pin. To change the pump handle for left handed pumping remove nuts and bolts on the "T" handle, and put "T" handle through the opposite side.
3. To attach straps, first put the sprayer on a hard surface, take the white plastic buckle and, while holding the sprayer up slightly, place the buckle under the tubular metal frame. Slowly push down frame into buckle. Repeat for other side.
4. Blue T jet flat fan nozzle is to replace the brass adjustable nozzle when a flat fan spray is needed.
5. Place some oil on the seal and check valve on the green cap. (should be done often)

### **HOW TO PREPARE UNIT FOR USE:**

1. Remove cap. Mix solution in separate receptacle making sure to follow manufacturer, directions. Pour pre-mixed solution into sprayer and replace cap firmly. Hand tighten only.
2. Place sprayer on back and pressurize tank by pumping 10 to 15 times. For continuous spraying pressure, the sprayer should be pumped every 5 seconds.
3. Periodically lubricate (with grease) the piston and piston seal. To get to the piston remove the two nuts and bolts securing the plunger to the "T" shaped handle. Then pull and twist the piston protector to remove it. Pull the piston out check seal, and lubricate with grease. Also periodically lubricate with oil the seal and check valve on the cap.

### **HOW TO CLEAN AND MAINTAIN:**

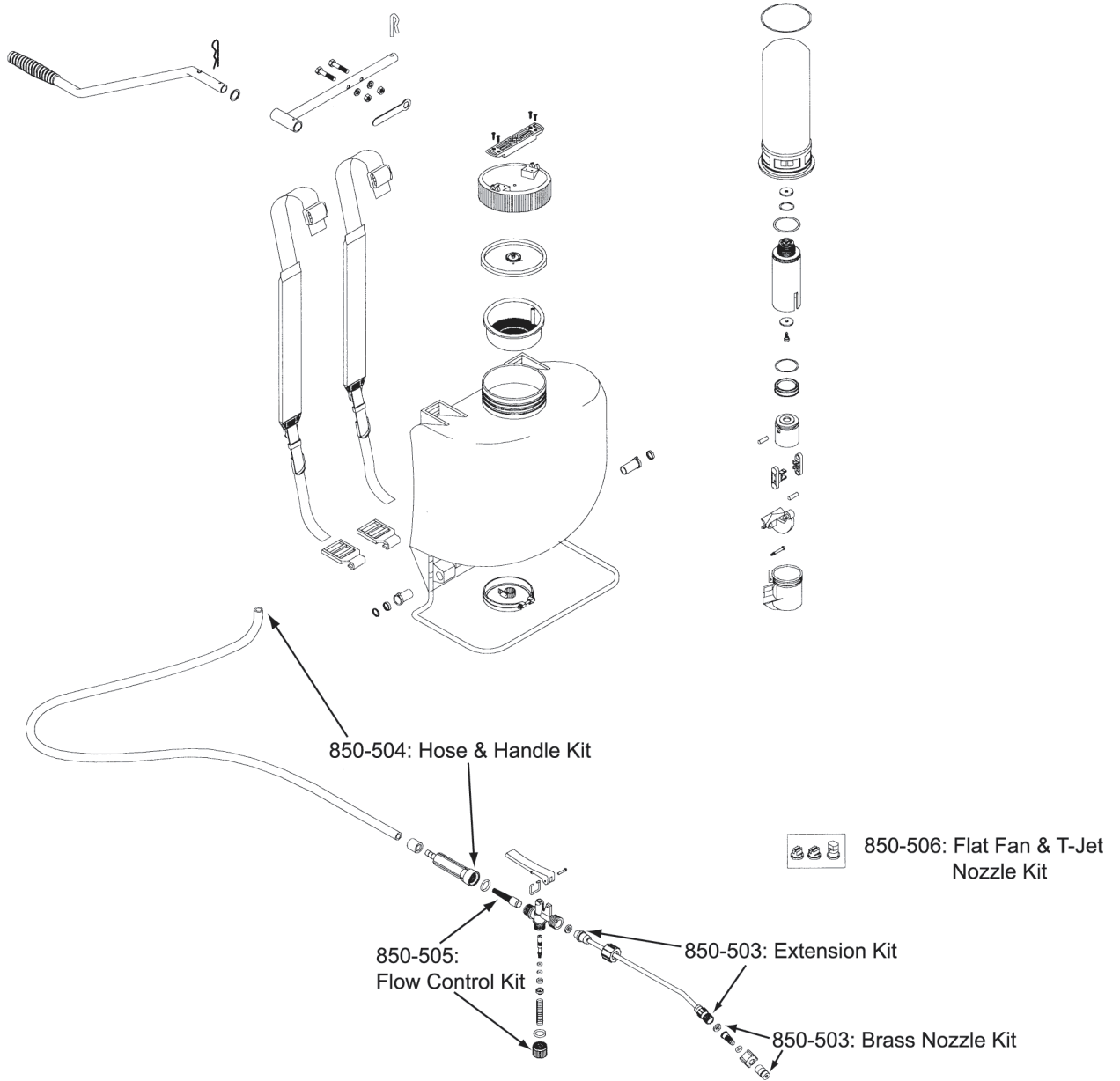
1. Properly dispose of any unused solution, and then rinse all parts thoroughly with clean water.
2. Leaving at least ½ gallon of clean water in the tank, pressurize and flush pump system by depressing flow control.
3. Always store tank clean and empty.

### **WARNINGS:**

- **ALWAYS water** test unit before using.
- **ALWAYS** wear protective clothing, eye protection, and gloves.
- **ALWAYS READ AND FOLLOW** label instructions for chemicals to be applied.
- **AFTER USE** - release pressure, empty, and clean the sprayer.
- **RELEASE** pressure in sprayer before servicing.
- **DO NOT** alter sprayer.
- **DO NOT** spray gasoline or other flammables.
- **DO NOT** store liquids in tank.
- **DO NOT** leave sprayer in the sun.

# BACKPACK SPRAYER MODEL 614

**Please Note:** These parts are not available at any retail store. If you need parts, or have questions regarding your 614 Back Pack sprayer, please call 1-800-253-4642, Monday through Friday, 8:00 a.m. to 7:00 p.m. and March 1-through August 31 on Saturday and Sunday; 10:00 am to 4:00 p.m., Eastern Time.



**Available Kits:**

- 850-500: Pump Seal Kit -- Contains all soft goods needed to repair pump
- 850-501: Flow Control Kit -- Contains all soft goods needed to repair flow control
- 850-502: Extension Kit (nozzle not included)
- 850-503: Brass Nozzle Kit
- 850-504: Hose w/Handle Kit
- 850-505: Flow Control Only Kit
- 850-506: Flat Fan & T-Jet Nozzle Kit

**RL FLO-MASTER®**

Root-Lowell Manufacturing Co.  
1000 Foreman Rd., P.O. Box 289  
Lowell, MI 49331  
616/897-9211 • 800/253-4642